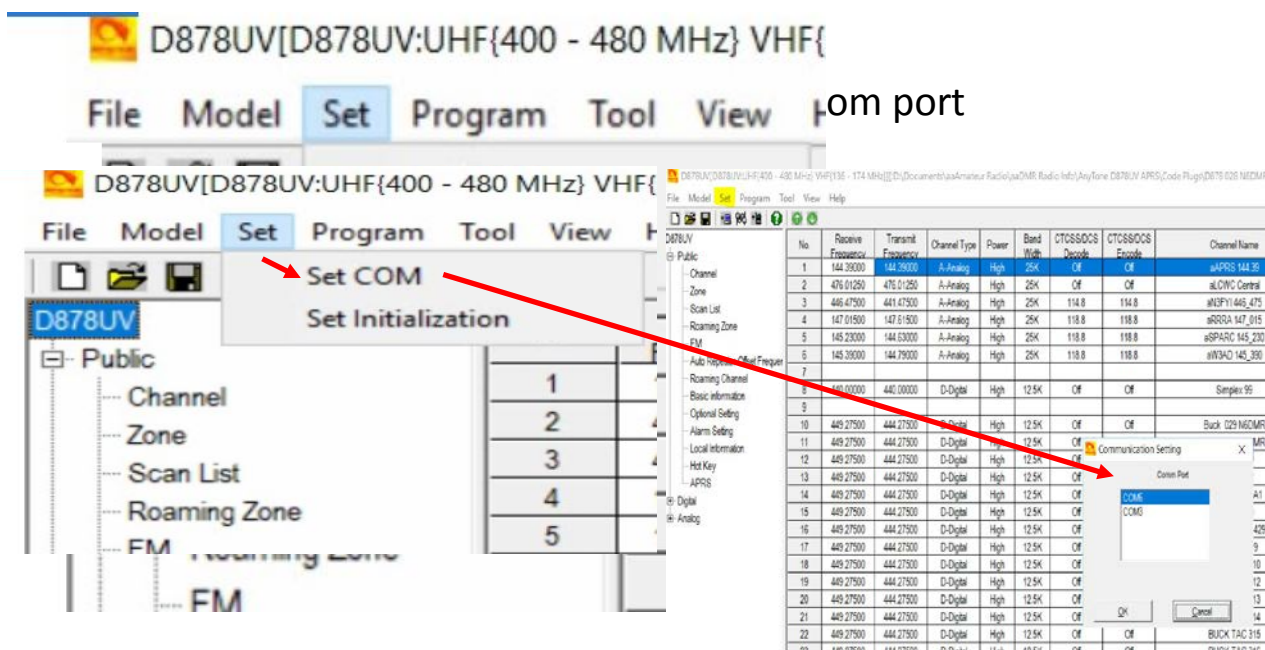


D168UV Firmware Update

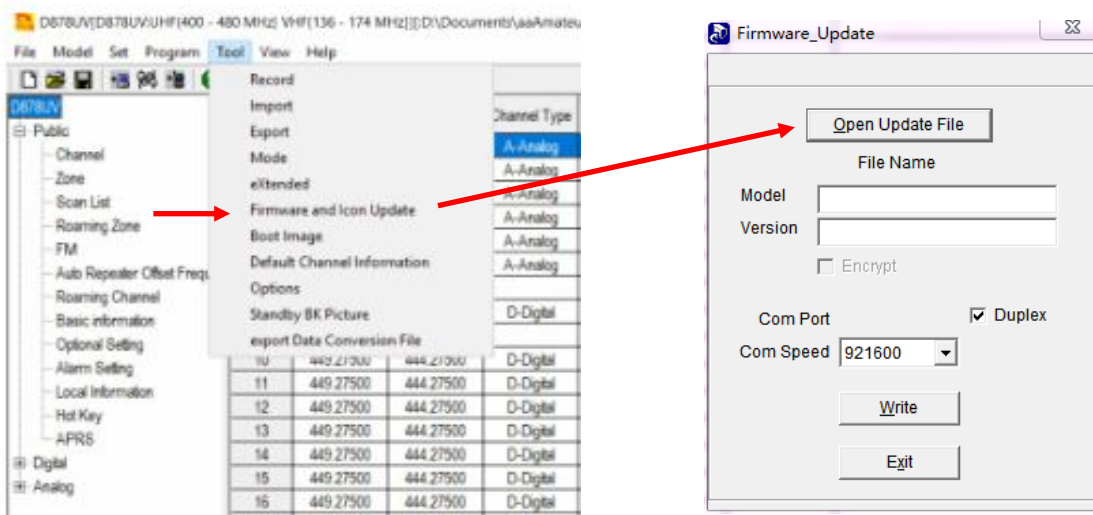


2. Use the USB C cable to connect PC and radio

3. Please always Turn OFF the GPS and APRS in the radio menu before any update to prevent the radio from going into TX when connected to PC, **as it may cause the CPU or memory IC damage.**

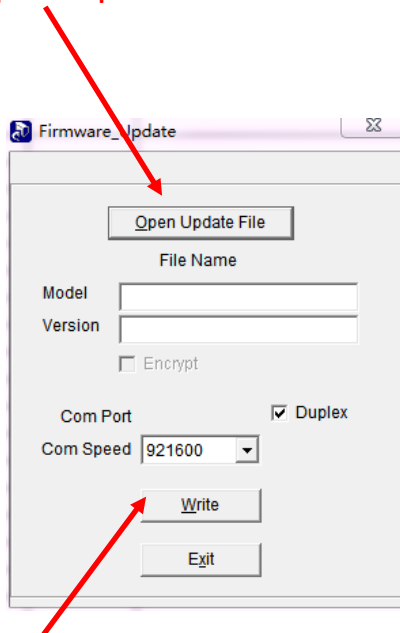
4. Hold pressing down the PF1 key and PF2 key (two keys below PTT) at the same time, power on radio, the red LED will begin blinking.

5. In CPS ->Tool -> Firmware and Icon Update, choose “Open Update File” and select the FW or Icon SPI file you want to update to:



D168UV Firmware Update

6. Click **Open Update File** and choose appropriate SPI file:



a.) For FW Update use the SPI file from the FW Update Folder

Note: For Icon Update please see separate Icon Update Instructions

7. Click **Write** to update the radio to the latest firmware. After the Firmware update, the radio should return to normal display on screen.

8. Reboot the radio MCU as described below when the FW update is finished

Important Notice: Please make sure the codeplug is saved to PC before you Complete the MCU update and reset.

9.) Rebooting the MCU (radio reset)

After updating the firmware, you need to reset to the radio Main Control Unit (MCU) as follows:

- a.) Power off the radio first.
- b.) Then while holding down the PTT and the PF1 button down at the same time, Power the radio ON

***** Please Wait – and do not turn the radio off while it restarts *****

c.) The radio will start up and the display will show :

Are you sure
you want to
Initialize the radio?
Confirm Exit

***** Select the Green menu key to confirm the MCU Reboot / Initialization *****

D168UV Firmware Update

d.) After the MCU reboot is confirmed, you will have to set the time zone, date and time and information as follows:

- Use the PF1 key to scroll or navigate through the GMT date / time fields
- Note the active field for data set will be shown in **Red** text
- Up and Down arrow keys will allow you to change the information in the fields
- AFTER you have all the correct information entered, use the Green menu key to confirm the settings and the radio will restart.



e.) You will now have to reload your saved code plug as the final step